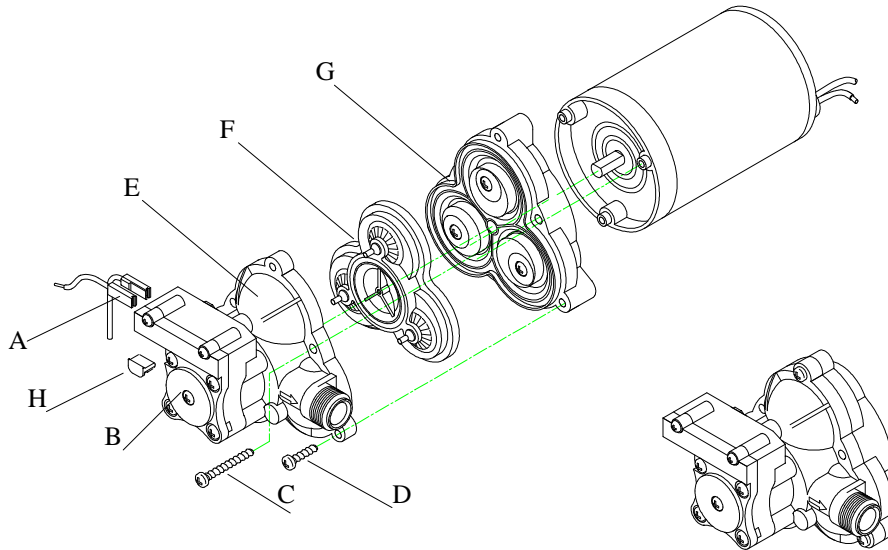


EARLIER VERSIONS:

This kit fits **all** earlier versions of the model 2088. Do not be alarmed if this kit appears physically different than your existing upper housing/switch assembly.

NOTE: Before starting work, make certain that power to pump is off. Release liquid pressure on the outlet line of pump before performing maintenance. You may find it easier to remove the pump and work on a bench.



DISASSEMBLY:

1. Disconnect lead wires (A) from pressure switch (B). Note which wire goes to each lead on the switch.
2. Remove the strain relief plug (H) by pushing out on plug from the motor side with a flat blade screwdriver. Pull the lead wires through the strain relief.
3. Remove the three upper housing screws (C). Note: Do not remove the pressure switch screws.
4. Remove the three long screws (D). These screws hold the pump assembly to the motor.
5. Remove the upper housing (E) and valve assembly (F).
6. Remove the old diaphragm/drive assembly (G) from the motor.

ASSEMBLY:

1. Place the valve assembly (F) on top of the new diaphragm assembly (G). Make sure the valve assembly seats properly on diaphragm (align groove in diaphragm with groove in valve housing).
2. Place the upper housing (E) on top of the valve assembly (F).
3. Tighten the three outer screws (C).
4. Align the "D" groove of the motor shaft with the "D" groove on the eccentric (wobbler) inside the lower housing (G). Check to be sure the drain holes are on the side with the motor mounting plate. Push pumphead until it seats on the motor face.
5. Put the three long screws (D) in place and screw down until each touches, then tighten each screw securely.
6. Place strain relief (H) in original position.



*ISO Certified Facility



SHURflo reserves the right to update specifications, prices, or make substitutions.

SHURflo ★
 5900 Katella Ave.
 Cypress, CA 90630
 (800) 854-3218 (562) 795-5200
 FAX (562) 795-7554

SHURflo East
 52748 Park Six Court
 Elkhart, IN 46514-5427
 ((800) 762-8094
 (574) 262-0478
 FAX (574) 264-2169
 © 2001 Printed in USA

SHURflo Ltd.
 Unit 5 Sterling Park
 Gatwick Road, Crawley
 West Sussex, RH10 2QT
 United Kingdom
 +44 1293 424000
 FAX +44 1293 421880