

### TYPICAL APPLICATION

Multi-fixture intermittent-duty Recreational Vehicle potable water installations and water transfer. For other applications, contact SHURflo.

### PUMP

Type	Chamber Diaphragm
Ports	1/2" NPSM
Liquid	100°F [ 37 °C] Max
Dry Prime	6 feet [ 1.8 M]
Inlet PSI	30 PSI [ 2.1 Bar] Max
Run Dry	Yes
Outlet PSI	125 PSI [ 8.5 Bar ] Max



### ELECTRICAL

Motor	12VDC Permanent Magnet, Intermittent Duty
Protection	Thermal Overload, Automatic Restart
Leads	16 AWG, 11.5" [ 29 cm ] Red +, 9.25" [ 23 cm ] Black-
Fuse	7.5 Amp Recommended
Shut-Off	55 PSI [ 3.7 Bar ] @ 12 VDC ± 5 PSI [ .4 Bar ]
Restart	35 PSI [ 2.4 Bar ] @ 12 VDC ± 5 PSI [ .4 Bar ]

### MATERIALS

Housing	Polypropylene
Valves	EPDM
Diaphragm	Santoprene
Hardware	Zinc-Plated Steel

### APPROVALS

CSA [ CE, e, C-Tick models available ]

### LIMITED WARRANTY

Aftermarket	3-Year Limited Warranty
OEM	Per OEM Agreement

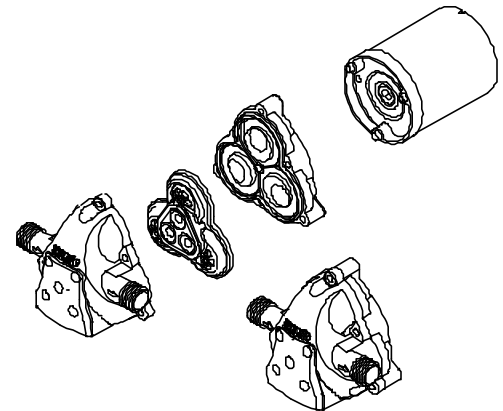
### SHIPPING

Boxed Weight	5 Lb [ 2.3Kg] each
Carton Weight	52 Lb [ 23.6 Kg]
Carton Size	24"L x 18"W x 11"H [61cm x 46cm x 28cm]

### RELATED DOCUMENTS

Catalog	MS-030-083
Installation Manual	911-953
Maintenance	911-953
Applications Specification	MS-020-005

### Component Exploded View

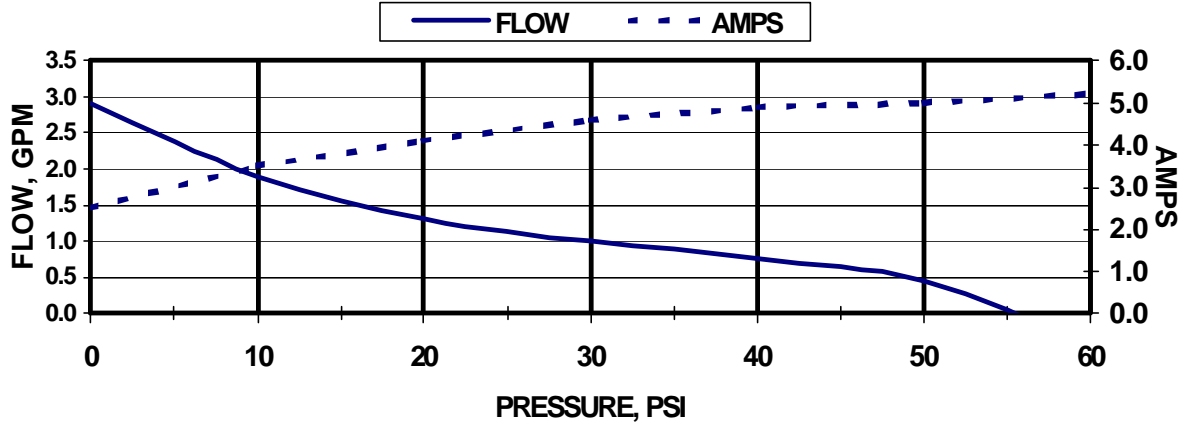


### Parts Kits

#	Component	Parts Kit
1	Switch Assembly	94-706-00
2	Upper Housing	94-706-01
3	Valve Assembly	94-706-02
4	Drive Assembly	94-706-06
5	Motor	77-022-00
6	Pump Head	TBD

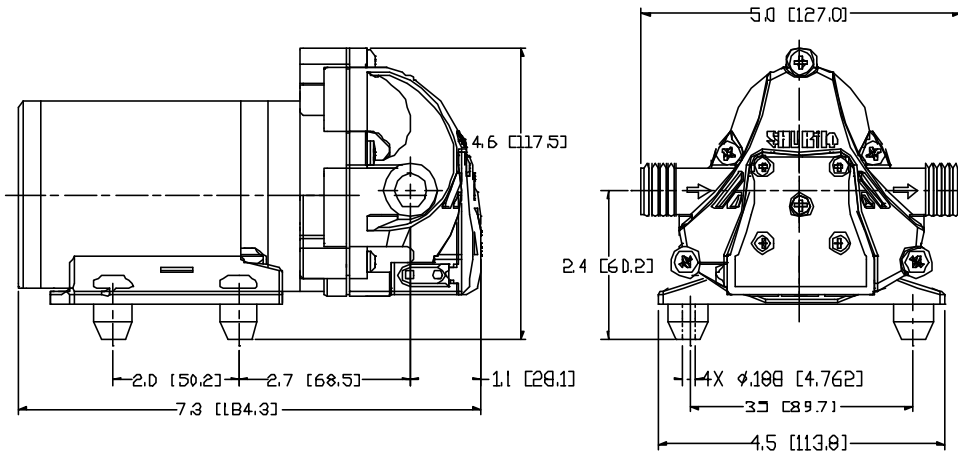
**Typical Performance**

PRESSURE		FLOW		CURRENT
BAR	PSI	GPM	LPM	AMPS
0.0	0	3.0	11.3	2.5
0.7	10	1.9	7.1	3.5
1.4	20	1.3	4.9	4.1
2.1	30	1.0	3.7	4.6
2.8	40	.76	2.8	4.9
3.4	50	.45	1.7	5.0



Actual flows and amp draws may vary depending on system configurations

**Typical Dimensions (no fittings)**



SHURflo reserves the right to update specifications, prices, or make substitutions.

SHURflo ★  
 5900 Katella Ave.  
 Cypress, CA 90630  
 (800) 854-3218 (562) 795-5200  
 FAX (562) 795-7554  
 www.shurflo.com

SHURflo East  
 52748 Park Six Court  
 Elkhart, IN 46514-5427  
 (800) 762-8094  
 FAX (574) 264-2169  
 © 2006 All Rights Reserved  
 www.shurflo.com

SHURflo Ltd. ★★  
 Unit 5 Sterling Park  
 Gatwick Road, Crawley  
 West Sussex, RH10 2QT  
 United Kingdom  
 +44 1293 424000  
 FAX +44 1293 421880