



# Lippert Slideout System

Lippert Components, Inc.  
65781 Sourwood Dr.  
Goshen, IN 46526  
Tele: (219) 642-4088 Fax: (219) 642-4089

- Adjusting room (horizontally & vertically)  
(View AA)

- Loosen 2 carriage bolts "A" on each bracket located at the end of each guide tube.
- For vertical adjustment turn vertical adjustment bolt "B" up or down to locate room height.
- For horizontal adjustment slide room to side it needs to go.
- Once room is located tighten carriage bolts "A".

(View A)

- Loosen 2 carriage bolts "A" on each bracket located at the end of each guide-tube.
- For vertical adjustment turn vertical adjustment bolt "B" up or down to locate room height.
- For horizontal adjustment loosen 2 bolts "C" on bottom side of brackets located at the end of each guide tube.
- Slide the room to which side it needs to go.
- Once room is located tighten all bolts "A" & "C".

- Adjusting room so it seals in the OUT position (View B)

- Locate actuator coming through the frame.
- On the end of the actuator there is a threaded shaft mounted the drive bracket with 3 nuts and a stop can.
- Move one of the 3/4" nuts on way or the other which are on each side of the drive bracket located on the threaded shaft — this will change the location of your seal going out.
- Make sure all 3/4" nuts are tight.

- Adjusting room so it seals in the IN position (View B)

- Locate actuator coming through the frame
- On the end of the actuator there is a threaded shaft mounted the drive bracket with 3 nuts and a stop can.
- Loosen the 3/4" nut on the backside of the stop can.
- Screw the can out or in, and then tighten down the nut — this will change the location of your seal going in position.

- To replace motor (View C)

- Disconnect wires to motor.
- Remove manual crank pin.
- Remove bolts.

- To replace actuator (View D)

- Disconnect manual crank shaft on end of motor "A".
- Disconnect motor wires "A".
- Take measurements "B" and "C".
- Remove all 3/4" nuts (3 total) and stop can "D" from threaded shaft on actuator.
- Remove bolts "E" and note locations of which holes were used on mounting plate.
- After everything is disconnected slide the actuator out of the frame. To replace new actuator follow the previous steps in reverse order.

- If for some reason the slideout room will not retract there is a manual override that is located on the opposite side of the slideout room. A crank handle is provided with your unit. Once you have the room in the closed position go to the closet dealer.

## Trouble shooting switch

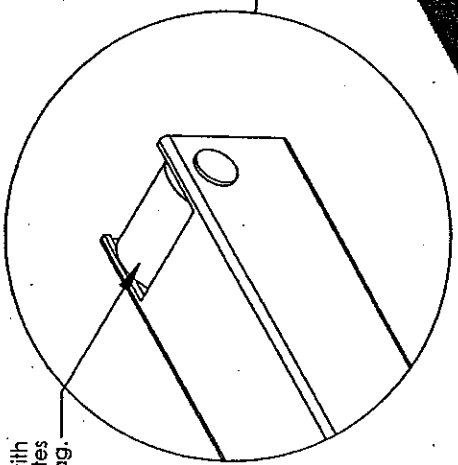
If room moves opposite from what the switch plate says, reverse the motor wires on back of switch (refer to the wiring diagram).  
Wire size must be 10 ga. minimum.

**LIPPERT COMP NTS, INC.**  
A Lippert Components Subsidiary

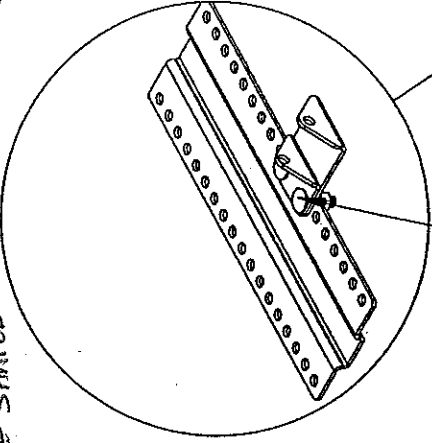


65781 Sourwood Dr.  
Goshen, IN 46526  
(574) 642-4088 Phone  
(574) 642-4390 Fax

**HELD IN PLACE BY TRIANGLE-SHAPED  
BRACE - ARMS ARE BOLTED (NOT WELDED)  
TO THIS BRACE. THERE ARE ADJUSTABLE SLOTS  
ON THIS TRIANGLE SHAPED BRACE**



Rear rollers with wear pads creates less drag.



Electric actuator for different room settings.

Front and rear rollers create less resistance which creates less amp draw.

Front rollers

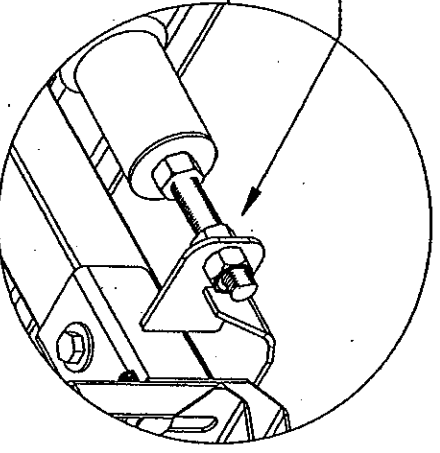
Synchronized gear rack system.

Horizontal and vertical adjustment heads for easy room adjustment.

Telescoping cross shaft

Systems available with cross shaft either inside or outside of chassis.

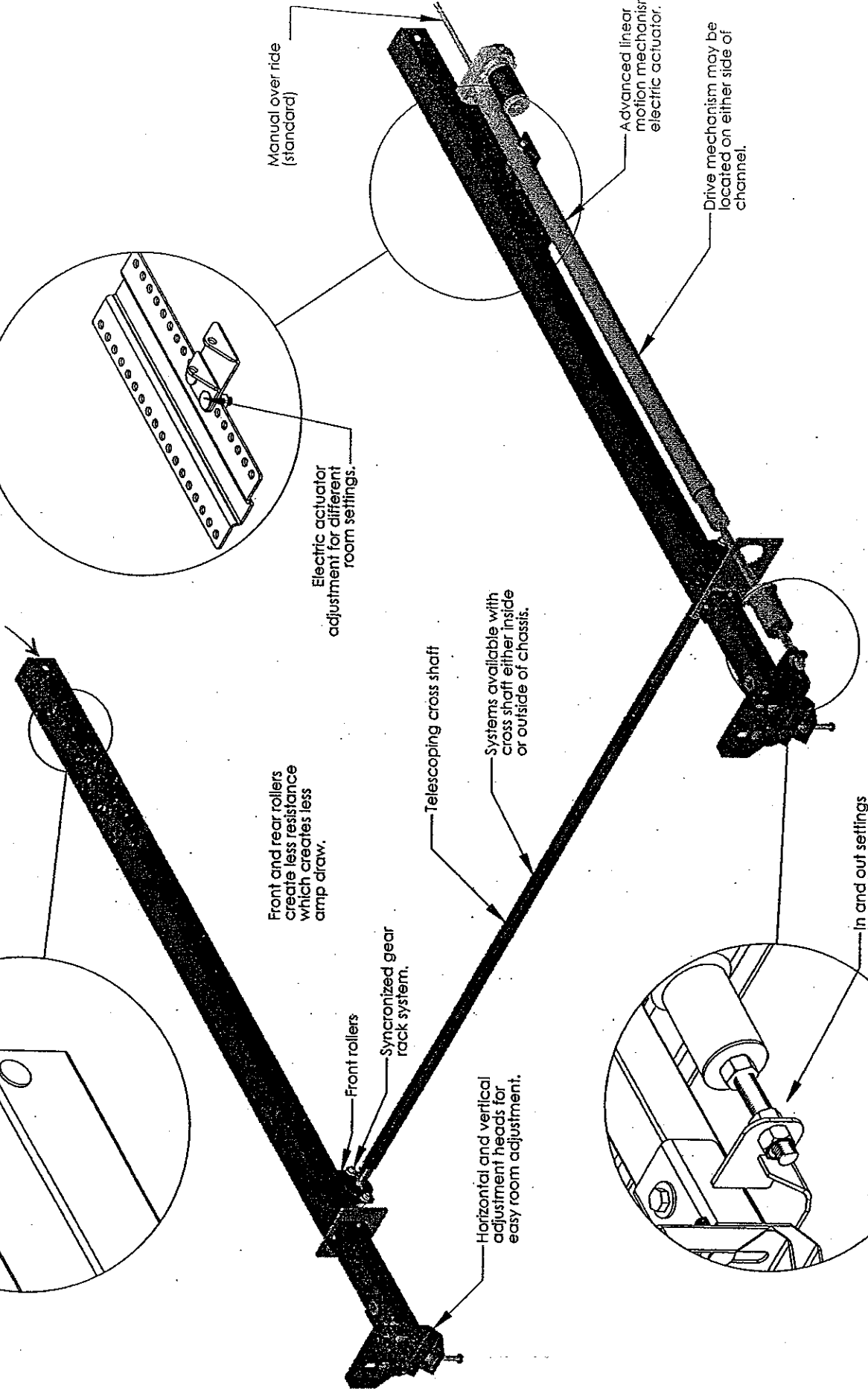
Manual override (standard)

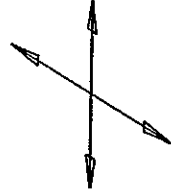


In and out settings in one location for easy room adjustability. No limit switches.

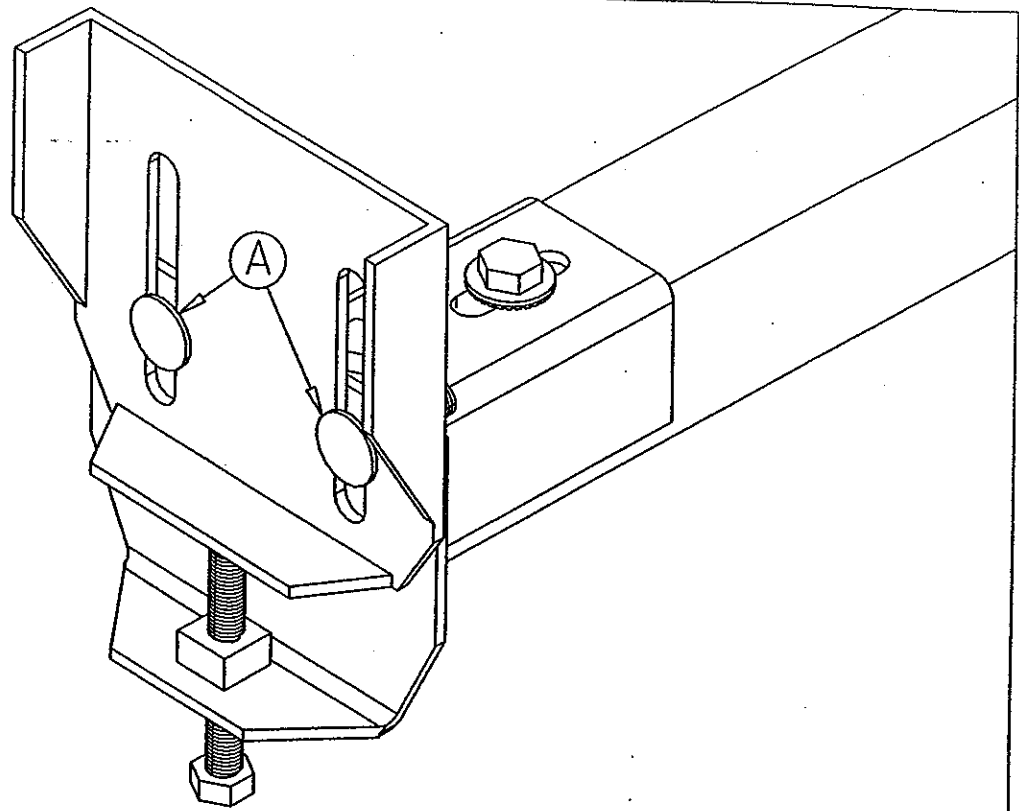
Advanced linear motion mechanism/electric actuator.

Drive mechanism may be located on either side of channel.

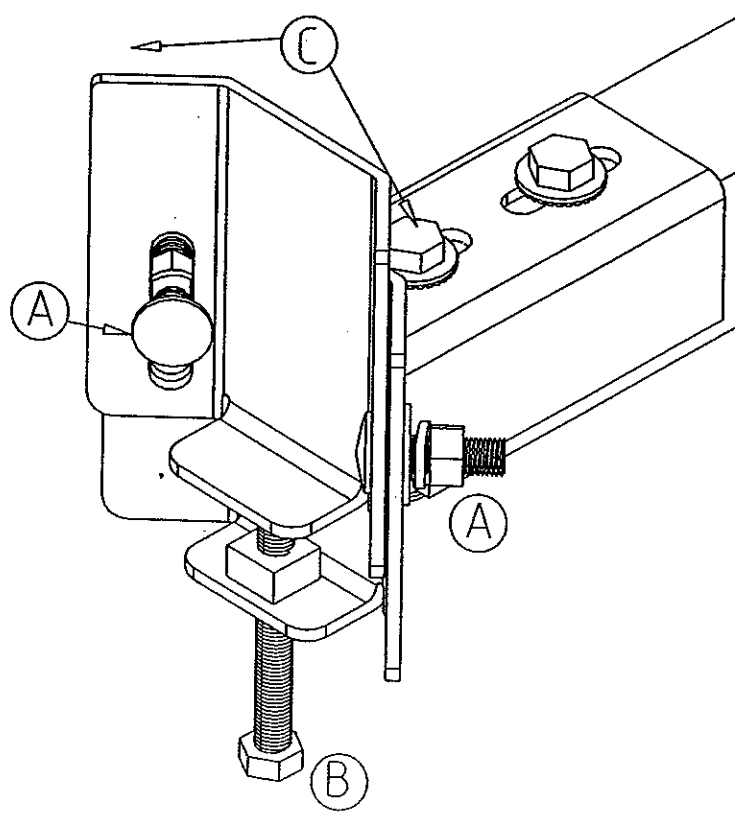




SIDE TO SIDE &  
UP AND DOWN  
ADJUSTMENT

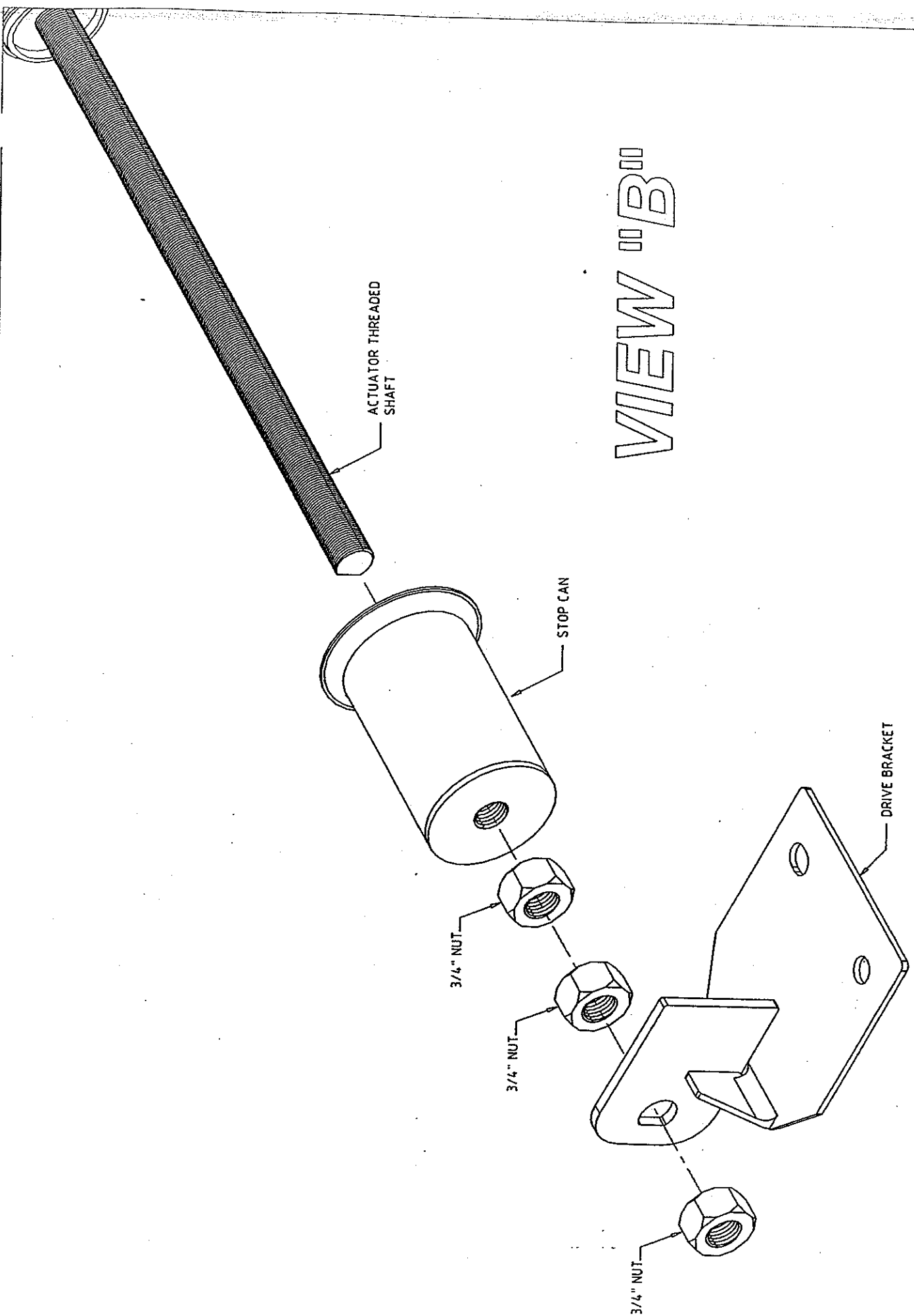


VIEW "AA"



VIEW "A"

# VIEW "B"

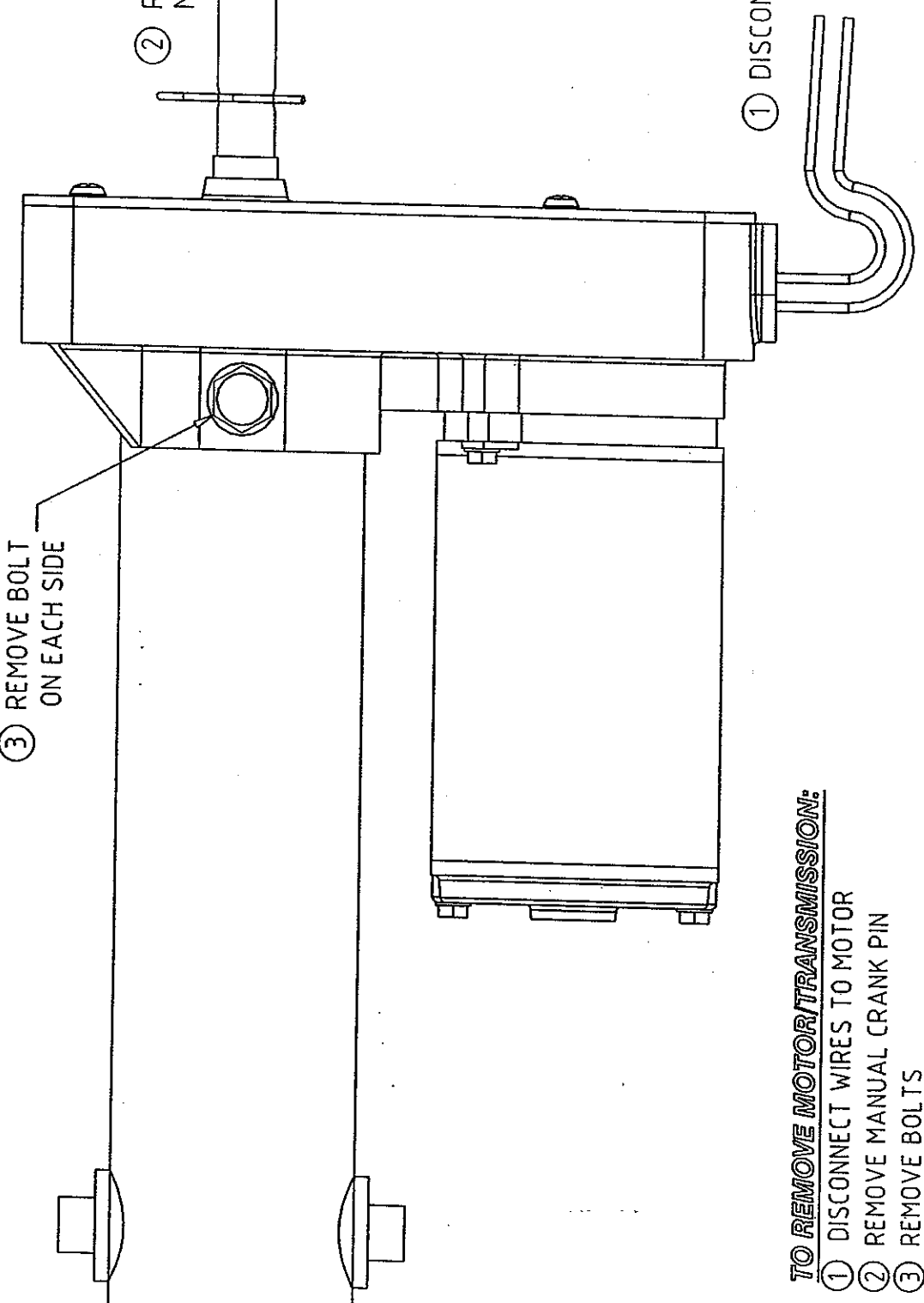


ACTUATOR ← | → MOTOR HOUSING

③ REMOVE BOLT ON EACH SIDE

② REMOVE PIN FROM MANUAL CRANK

① DISCONNECT WIRES



**TO REMOVE MOTOR/TRANSMISSION:**

- ① DISCONNECT WIRES TO MOTOR
- ② REMOVE MANUAL CRANK PIN
- ③ REMOVE BOLTS

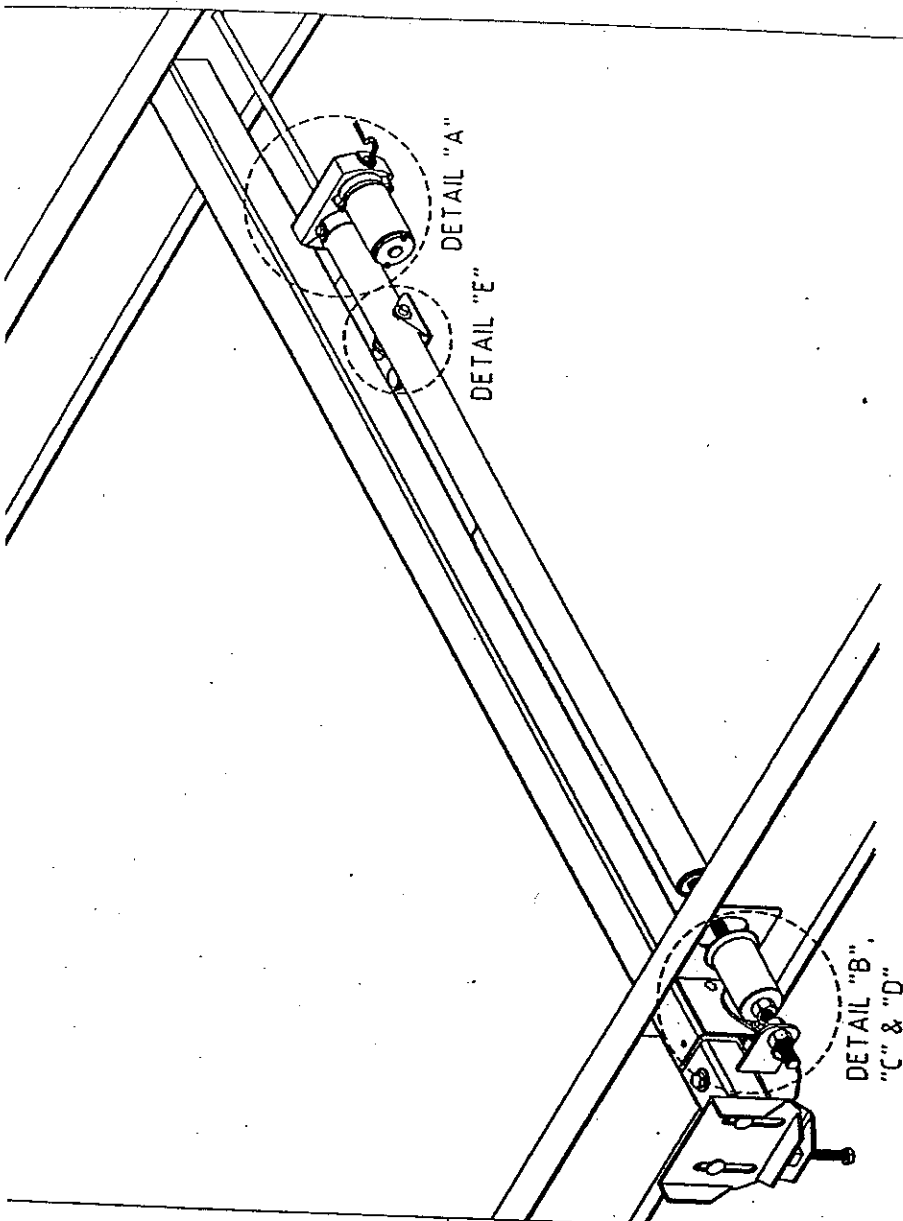
**TO INSTALL NEW MOTOR/TRANSMISSION:**

REVERSE ORDER OF DIRECTIONS TO REMOVE MOTOR/TRANSMISSION

NOTE: PIN IN TRANSMISSION MUST BE ALIGNED WITH NOTCH IN ACTUATOR

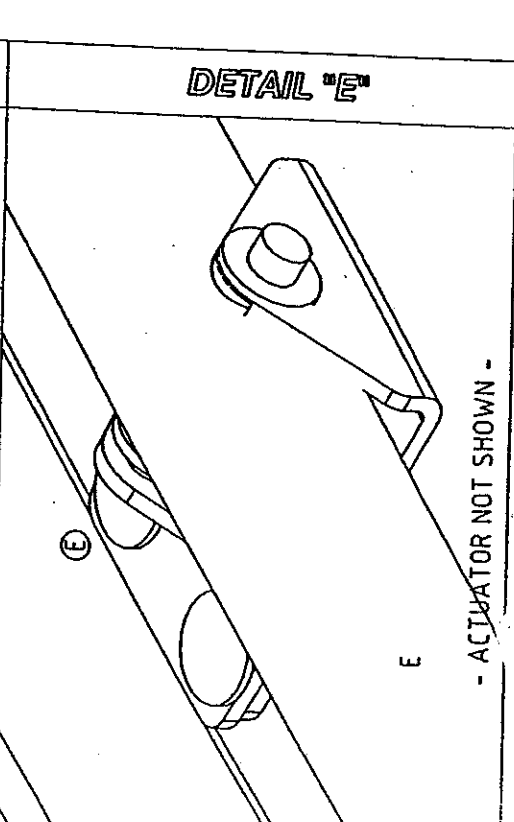
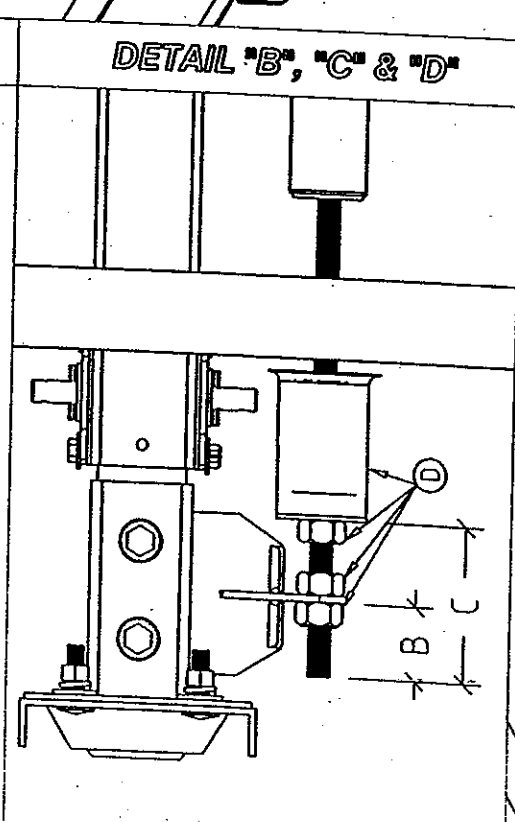
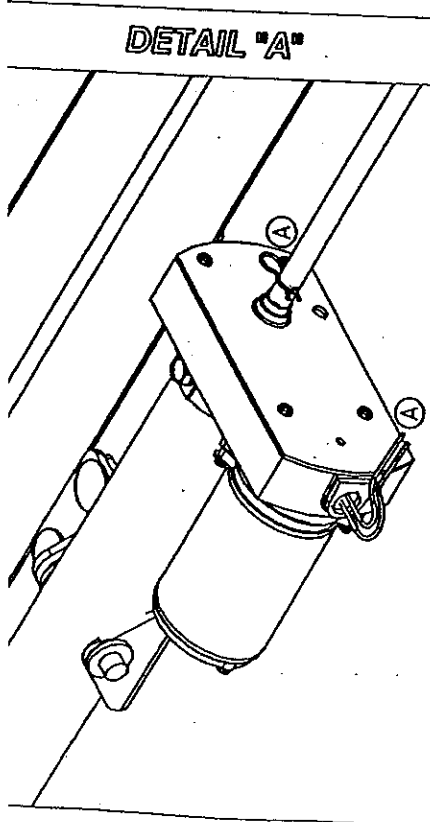
NOTE: BOLT HOLE IN TRANSMISSION MUST BE IN LINE WITH HOLE IN ACTUATOR

VIEW "C"



- To replace actuator**
- Disconnect manual crank shaft on end of motor "A".
  - Disconnect motor wires "A".
  - Take measurements "B" and "C".
  - Remove all 3/4" nuts (3 total) and stop can "D" from threaded shaft on actuator.
  - Remove bolts "E" and note locations of which holes were used on mounting plate.
  - After everything is disconnected slide the actuator out of the frame. To replace new actuator follow the previous steps in reverse order.

VIEW "D"



E  
- ACTUATOR NOT SHOWN -