

# **MOR/ryde Rubber Equalizer Suspension System (Double Eye Leaf Spring) RE Installation Instructions**



MOR/ryde International  
1966 Moyer Avenue  
Elkhart, IN 46516  
574-293-1581  
[www.morryde.com](http://www.morryde.com)

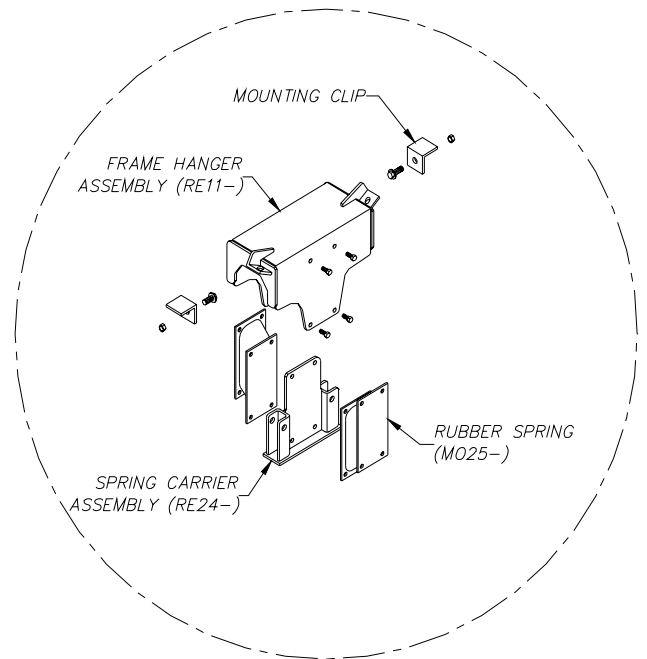
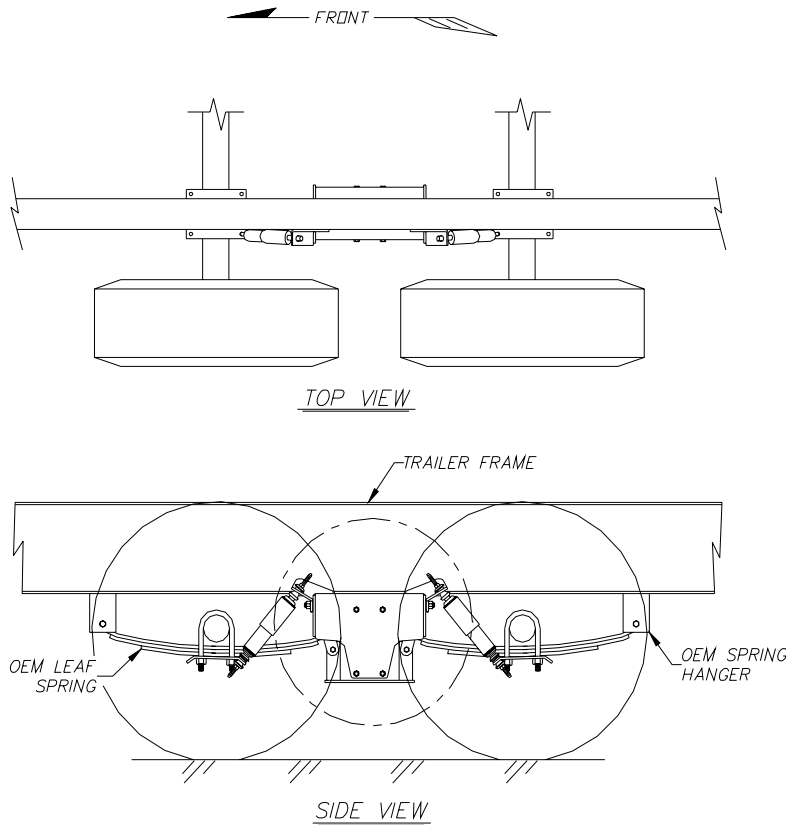
## **Applications for the following trailers**

Tandem Axle trailers with 33" or 35" wheelbase,  
and with 3" min. clearance between tire and frame.

# MOR/ryde "RE" Installation Instructions

Instructions will assume procedures apply to both sides of trailer.

## TYPICAL TANDEM "RE" SUSPENSION KIT



U.S. PATENT NO. 6,478,321

Required Tools for Installation of MOR/ryde "RE" Suspension Kit	
*Floor Jacks	Welder
*Safety Stands	Drift Pin
Socket Set	Hand Grinder
Wrench Set	Cutting Torch
* Check for Adequate Capacity. They must meet or exceed the weight of your vehicle.	

Torque Chart Foot-LBS +/- 10%		
Bolt Size	Grade 5	Grade 8
1/4 - 20	7	10
5/16-18	14	20
3/8-16	25	35
7/16-14	40	55
1/2-13	60	90
5/8 - 11	115	170
5/8-18	125	185
3/4 - 10	190	280



Step 1

With suitable floor jack raise trailer frame so tires are approximately 2" off the ground. Place safety stands under each frame member. Be sure all four corners of trailer are securely supported with suitable stands. Remove wheels.



Step 2

On the longitudinal trailer frame, mark a vertical center line between the front and rear leaf spring hangers. Repeat procedure on opposite side.



Step 3

Place a small floor jack under each axle. If applicable remove nuts, washers and bushings of top shock absorber stem.



Step 4

Remove equalizer / shackle bolts. Lower the axle, be sure not to over extend brake lines. If required, rest axles on suitable blocks or stands.



Step 5

Cut the equalizer hanger off the frame. Be careful not to damage trailer frame.



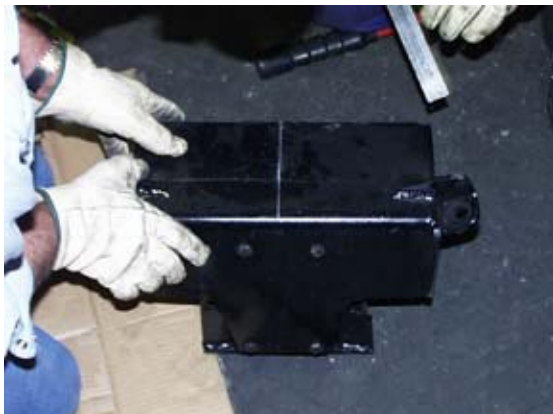
Step 6

Cut the shock mounts off the frame. Be careful not to damage trailer frame.



Step 7

Grind the trailer frame at the shock mount and the hanger locations to a smooth finish.



Step 8

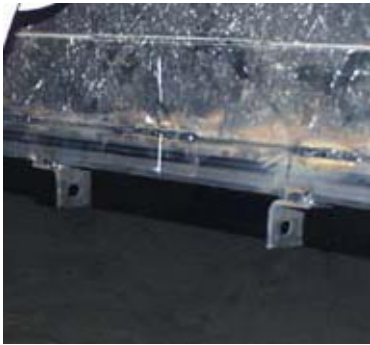
Using a square, mark a center line across the top of the MOR/ryde Hanger Box.





Step 9

Using a floor jack, raise the MOR/ryde Hanger Box to the bottom of the trailer frame. Be sure the MOR/ryde Hanger Box is tight to the frame, shock mounts are against frame, and center lines match. Tack weld the mounting brackets to the bottom of the frame. Be sure the slot in the mounting bracket aligns with the hole in the MOR/ryde Hanger. Also be sure the mounting bracket is tight against the Hanger Box and bottom of the frame.



Step 10

Lower the MOR/ryde Hanger and weld mounting clips to the frame. Clips should be welded on all four edges.



Step 11

Using 1/2" bolts provided, bolt Hanger Box onto mounting clips.



Step 12

Bolt shackle plates to "U" channel on Spring Carrier. Complete this procedure for the remaining 3 pairs of shackle plates.



Reinstall shock absorbers and wheels. Torque all hardware. Check brake lines. Raise trailer, remove jacks and lower unit to the ground.

Step 13